

Pregnancy and Long-Term Maternal Cardiovascular Health Progress Through Harmonization of Research Cohorts and Biobanks

Anne Cathrine Staff, Christopher W.G. Redman, David Williams, Paul Leeson, Kjartan Moe, Basky Thilaganathan, Per Magnus, Eric A.P. Steegers, Eleni Z. Tsigas, Roberta B. Ness, Leslie Myatt, Lucilla Poston, James M. Roberts; for the Global Pregnancy Collaboration (CoLab)*

• Online Data Supplement

Background: Why We Need to Better Understand the Associations Between Pregnancy and Future Cardiovascular Health

In 2011, the American Heart Association added preeclampsia, gestational diabetes mellitus (GDM), and delivery of a growth-restricted child as pregnancy-related risk factors for cardiovascular disease (CVD).¹ This move was applauded by the obstetric research community, which for some years had emphasized the importance of pregnancy as a stress test for detecting women at excessive risk for premature CVD.²⁻⁴

CVD is the leading cause of death for men and women in high-income and most low-to-middle-income countries.⁵ Globally, coronary artery disease kills more women than men,⁶ although women develop CVD 10 to 15 years later than men. Women frequently present with unrecognized CVD symptoms and are twice as likely as men to die of a first acute myocardial infarction if <50 years old.⁷ The preclinical stages of CVD are evident from a young age and are modifiable through control of classic risk factors (insulin resistance/diabetes mellitus, obesity, lack of exercise, tobacco smoking, hypertension, and hyperlipidemia).^{8,9} In this regard, pregnancy is a window of opportunity for identifying those women with perinatal complications who may benefit from early risk detection and early CVD prevention.

In this article, we summarize the associations between pregnancy, placenta-related pregnancy complications, and future maternal CVD. We present established as well as more novel hypotheses, which may explain these epidemiological associations. The interventions that potentially could reduce risks of future CVD are enumerated. To facilitate progress, we suggest methods of harmonizing study designs, long-term

follow-ups of pregnancy cohorts and biobanks, and pooling of the world's data in ways that can enhance the power of current and future research.

Associations Between Pregnancy Complications and Future CVD Risk

Preeclampsia and Fetal Growth Restriction and Future CVD Risk

Preeclampsia is a pregnancy-specific multisystem disorder defined by new-onset hypertension and proteinuria after gestational week 20, or new onset preeclampsia-associated signs in the absence of proteinuria.⁸ Preeclampsia requires the presence of a placenta or residual placental components (postpartum preeclampsia), but the relative contributions of maternal predisposing factors versus placental factors to its pathophysiology are not well delineated.⁹ Women with essential hypertension, obesity, pregestational diabetes mellitus, and renal disease are at elevated risk for developing preeclampsia. Several large-population-based studies demonstrate that women who have had preeclampsia are at increased risk for later CVD and premature death compared with women with healthy pregnancies.¹⁰⁻¹⁴ Women who have experienced either preeclampsia or fetal growth restriction have a 2-fold increased risk compared with pregnancies with a normal outcome. When a woman has both preeclampsia and fetal growth restriction, the likelihood of CVD may be as much as 8-fold higher.^{15,16} Recurrent,^{12,14,17} more severe, and early-onset preeclampsia, as well as preeclampsia with concurrent neonatal morbidity, increases the risk of later life CVD,^{14,16,18,19} much more than gestational hypertension (without proteinuria

From the Faculty of Medicine, University of Oslo, Oslo, Norway and Departments of Obstetrics and Gynaecology, Oslo University Hospital, Oslo, Norway (A.C.S., K.M.); Nuffield Department of Obstetrics and Gynaecology (C.W.G.R.), Radcliffe Department of Medicine (P.L.), University of Oxford, Oxford, United Kingdom; Department of Maternal Medicine, Institute for Women's Health, University College London, London, United Kingdom (D.W.); Department of Obstetrics and Gynaecology, St. George's Hospital, London, United Kingdom (B.T.); Division of Epidemiology, Norwegian Institute of Public Health, Oslo, Norway (P.M.); Department of Obstetrics and Gynecology, Erasmus Medical Centre, Rotterdam, The Netherlands (E.A.P.S.); Preeclampsia Foundation, Melbourne, FL (E.Z.T.); Division of Epidemiology and Disease Control, University of Texas School of Public Health, Houston (R.B.N.); University of Texas Health Science Center San Antonio (L.M.); Department of Women's Health, King's College London, London, United Kingdom (L.P.); and Department of Obstetrics Gynecology and Reproductive Sciences, Epidemiology and Clinical and Translational Research, Magee-Womens Institute, University of Pittsburgh, PA (J.M.R.).

*A list of the CoLab consortium participants among the study authors is given in the Appendix.

The online-only Data Supplement is available with this article at <http://hyper.ahajournals.org/lookup/suppl/doi:10.1161/HYPERTENSIONAHA.115.06357/-DC1>.

Correspondence to Anne Cathrine Staff, Department of Obstetrics and Department of Gynaecology, Oslo University Hospital, location Ullevål, Kirkeveien 166, Post Box 4956, Nydalen, 0424 Oslo, Norway. E-mail uxnnaf@ous-hf.no

(*Hypertension*. 2016;67:251-260. DOI: 10.1161/HYPERTENSIONAHA.115.06357.)

© 2015 American Heart Association, Inc.

Hypertension is available at <http://hyper.ahajournals.org>

DOI: 10.1161/HYPERTENSIONAHA.115.06357

or other preeclampsia-associated features) or late-onset preeclampsia.^{13,20–22}

Prematurity, Miscarriage, and Future CVD Risk

Women with a history of preterm birth (<37 weeks gestation), even without pregnancy-induced hypertension²³ or preeclampsia,^{10,11,24} are twice as likely to die from CVD compared with women who delivered at term. Spontaneous preterm labor is caused by multiple pathological processes²⁵; nonetheless, delivery of a preterm or small for gestational age infant overall, independent of smoking and other risk factors, has been shown to increase the risk of CVD death and hospitalization later in life.²⁶ Although less frequently investigated, recurrent miscarriages have also been linked to future CVD²⁷ and to endothelial dysfunction.²⁸ Additionally, recurrent pregnancy loss is associated with pregnancy complications, such as placental abruption and hypertensive pregnancy disorders, which are independently associated with markers of cardiovascular dysfunction, at least in the short term.^{29,30}

Diabetes Mellitus in Pregnancy and Future CVD Risk

Women who develop GDM have a 70% higher risk for future CVD than those with no history of the disorder, mostly attributed to an increased risk for developing type 2 diabetes mellitus.³¹ As many as half of women with a pregnancy complicated by GDM develop type 2 diabetes mellitus within 5 years,³² and the diabetes mellitus risk is reported as 7-fold when compared with normoglycemic pregnancies.³³ Whether pregnancy per se exacerbates the increased risk for later life CVD associated with pre-existing diabetes mellitus is not known. Women with type 1 diabetes mellitus seem, however, to be more at risk for developing retinopathy and nephropathy later in life if they had preeclampsia.³⁴ Chronic kidney disease is considered an independent CVD risk factor,³⁵ and nephropathy may, therefore, add to the overall CVD risk after a preeclamptic pregnancy in women with pregestational diabetes mellitus.

Normal Pregnancy and Future Risk for CVD

Several studies report an association between the number of a woman's pregnancies, even without adverse outcomes and maternal CVD risk,^{36–40} whereas others fail to find such an association.^{41,42} For men, a high number of children does not associate with increased CVD risk.⁴³ In a large Swedish population-based registry study, parity was independently associated with future maternal CVD in a J-shaped fashion (where 2 births represented the lowest risk) after adjustment for socioeconomic factors and pregnancy-related complications. The highest risk was among women with >5 births.⁴⁰ The same J-shaped trend between number of births and maternal cardiovascular mortality was found in a recent study from the Norwegian Birth Registry, but only in women with <10 years of education.⁴⁴ The number of offspring does not seem to increase the CVD risk for the male partners, after correcting for obesity and metabolic risks,³⁸ suggesting a pathophysiologic effect from pregnancy, but this finding requires replication. Not only nulliparity per se has been associated with increased CVD risk⁴⁰ but also subfertile women who eventually conceive and have a child are at

increased risk for CVD, even after adjusting for CVD risk factors and adverse pregnancy outcomes, suggesting shared risk factors for CVD and infertility.⁴⁵

Women who deliver either large or small birth weight for gestational age infants have been identified as being at increased risk for future CVD.⁴⁶ However, study results are inconsistent,⁴⁶ and the association may be influenced by the population prevalence of gestational and pregestational diabetes mellitus, as these conditions lead to large gestational age babies. The association of both large gestational age and small gestational age with preeclampsia⁴⁷ further confounds the birth weight and CVD relationship. Perhaps, because placental weight and newborn weight are highly correlated, low placental weight also seems to increase maternal risk for future CVD.⁴⁸ The impact of breast feeding on long-term maternal CVD seems also to be protective.⁴⁹

Pregnancy: Mechanistic Associations to Future CVD

During pregnancy, the maternal cardiovascular system undergoes substantial physiological adaptive changes,⁵⁰ which may also differ according to fetal sex and pregnancy outcome.⁵¹ Repetitive cardiac stress could underlie a report of an association between the number of live births with a small, but significant, increase in left ventricular mass and a small reduction in left ventricular ejection fraction from middle age.⁵² In addition, the metabolic consequences of uncomplicated pregnancies could be potentially atherogenic,⁵³ which could be exaggerated in those with pre-existing dyslipidemia, for example, in obese women or diabetics.

Preeclampsia/Placental Dysfunction and Mechanisms for Increased Maternal CVD Risk

The most widely held hypothesis to explain the link between preeclampsia and CVD focuses on common risk factors.⁵⁴ Preeclampsia and CVD may share common genetic risk factors,^{55,56} although specific genetic origins of preeclampsia and placental dysfunction remain ill defined. Both preeclampsia⁵⁷ and atherosclerosis^{58,59} arise from vascular inflammation with its associated endothelial dysfunction. Common risks include obesity, diabetes mellitus, insulin resistance and hyperglycemia, dyslipidemia (including hypertriglyceridemia and small, dense low-density lipoprotein particles),^{60–64} hypertension, a family history of CVD,⁶⁵ and the metabolic syndrome.^{18,66} Paradoxically, cigarette smoking, which augments the risk for atherosclerosis and CVD, reduces the risk for preeclampsia in women who smoke in middle and late pregnancy.⁶⁷ The latter may be mediated by a modulatory effect of carbon monoxide on placental production of angiogenic and antiangiogenic factors.⁶⁸ The antiangiogenic factor soluble fms-like tyrosine kinase 1 (sFlt1; reviewed below as an important biomarker for early-onset preeclampsia) is lower in smokers than in non-smokers during pregnancy.⁶⁹

An alternative hypothesis suggests that pregnancy in general, and preeclampsia (and other placental disorders) in particular, worsen pre-existing, subclinical CVD risk factors or even induce de novo risk as reviewed above. A large Norwegian population-based study, while proposing that pregnancy risk factors are more important,^{70–72} also showed

that most CVD risk factors remained significantly higher after preeclampsia following adjustment for prepregnancy values. Possibly, the dyslipidemia of preeclampsia could accelerate progression toward clinical and more advanced atherosclerotic lesions and hypertension.⁷³

It is possible that products of the dysfunctional placenta in preeclampsia could permanently compromise the maternal cardiovascular system.^{73,74} These could include inflammatory molecules in general as well as factors that perturb maternal angiogenic balance: increased circulating sFlt1 and soluble endoglin and reduced placental growth factor (PlGF), as well as unmeasurable low levels of free vascular endothelial growth factor during pregnancy.⁷⁵ Although sFlt1 falls rapidly after delivery, a modest dysregulation several months and years after a preeclamptic pregnancy has been described.^{76–78} Increased angiotensin II sensitivity and sFlt1 response to angiotensin II infusion in women with previous preeclampsia has been reported, supporting lasting dysfunctional angiogenic responses.⁷⁹ Interestingly, agonistic autoantibodies against the angiotensin II type 1 receptor are present in many preeclamptic pregnancies and may also persist postpartum in some cases and seem to correlate with dysregulated angiogenic biomarkers,⁸⁰ suggesting another potential molecular link between pregnancy and future CVD that merits further research. Studies before conception are needed to determine whether these pregnancy and postpartum findings reflect a pre-existing profile or placental dysfunction. Of relevance, a precipitating role for preeclampsia per se has been implicated in the study of the serum proteome of an experimental mouse model in which preeclampsia was induced by adenovirus delivery of sFlt1. At 6 months postpartum, increased expressions of proteins related to CVD were found in comparison with the postpartum profile of normally pregnant mice.⁸¹

Stem cells, either maternal mesenchymal stem cells or endothelial progenitor cells (EPCs), offer intriguing potential as mediators of persistent cardiovascular dysregulation caused by a dysfunctional placenta. Circulating EPCs are reportedly reduced in preeclampsia,⁸² but prepregnancy studies of EPC are lacking. EPCs, markers of endothelial health, are similarly reduced in patients with essential hypertension, in whom EPC senescence is accelerated. It is possible, although not established, that the extremely low free vascular endothelial growth factor concentrations associated with any pregnancy, and possibly even lower in early-onset preeclampsia or fetal growth restriction, could reduce EPCs. Both vascular endothelial growth factor and PlGF increase EPC recruitment, mobilization, and survival outside of pregnancy.^{83,84} A reduction in EPC in pregnancy, such as observed in preeclampsia, could potentially affect long-term endothelial function.

The influence of pregnancy on the maternal heart,⁵² and effects of preeclamptic pregnancies in particular, has recently been strongly implicated in long-term cardiovascular risk.⁸⁵ Eighty percent of women with preeclampsia show an adaptive response to the increased afterload of preeclampsia by left ventricular remodeling. One year postpartum, even in the absence of hypertension, one third of previously preeclamptic women presented global diastolic and regional longitudinal systolic dysfunction with septal bulging, indicative of myocardial

damage, possibly as a consequence of ischemia or fibrosis. These changes were more severe and more frequent when associated with preterm, rather than term preeclampsia.⁸⁵ The long-term CVD outcome remains unknown,⁷⁴ but as diastolic dysfunction is recognized to predate heart failure and increased mortality,^{86,87} poor long-term cardiovascular health is likely.

Important Research Questions

One of the most important questions is whether pregnancy causes or reveals an increased risk for CVD problems. The primary issues are of prepregnancy predisposition, the effect of pregnancy itself, and exaggeration of risk by pregnancy complications. These can only be resolved by new and necessarily expensive prospective longitudinal cohort studies of women prepregnancy and postpregnancy. Medical management will be much better targeted and evidence based once these issues have been clarified.

Optimal Long-Term Medical Supervision of Women After Pregnancies Associated With Increased CVD Risk

In general, it is recommended that after pregnancy, women with pre-existing renal or cardiac complications or who had diabetes mellitus should be offered appropriate specialist follow-up to assess CVD risk and reduce ultimate CVD morbidity. The advice for clinical follow-up of an otherwise healthy woman after complication in pregnancy associated with higher CVD risk is, however, fragmentary, and there is no global consensus (Table S1 in the online-only Data Supplement). Furthermore, many of the recommendations recognize the inadequacy of informative data,⁸⁸ and in the case of the American College of Obstetricians and Gynecologists, the recommendations are presented only as suggestions.⁸ For women with GDM, several guidelines (Table S1) recommend routine oral glucose tolerance testing postpartum, or measurements of fasting glucose and hemoglobin A1c (HbA1c).³² Adherence to these postpartum recommendations is generally unknown, and long-term follow-up recommendations after GDM are lacking in most guidelines. Currently, there are no recommendations for maternal follow-up after premature delivery, fetal growth restriction, small gestational age, or recurrent pregnancy loss in relation to future CVD.

A much better understanding of the natural history and time course of progression toward CVD after at-risk pregnancies is needed if evidence-based strategies for follow-up are to be more widely adopted. Demonstration of cost benefit is essential to convince policy makers and payers. We also need to know if early intervention would be more effective than current ad hoc and unsystematic follow-up. An established risk score for CVD, the Framingham score, calculates the 10-year sex-specific risk for cardiovascular events. A young population is in general unlikely to have CVD in the next 10 years. Framingham risk score is, therefore, low for young women, even for those with classical and sex-independent risk factors for CVD, such as diabetes mellitus and obesity.⁸⁹ This present risk score, therefore, seems inapplicable for young women, especially because the CVD risk associated with pregnancy disorders is not included. Indeed, the American

Heart Association emphasizes that a low Framingham risk score is not sufficiently exclusive of risk for CVD in young women⁵ and have implemented lifestyle advice independent of this scoring system for women whose pregnancies were complicated by preeclampsia, fetal growth restriction, GDM, or a premature delivery (Table S1).

Pregnancy Biomarkers and Improved Risk Stratification for CVD and Targeted Intervention

Preeclampsia and preterm birth are associated with increased insulin resistance, dyslipidemia, and inflammatory activation all relevant in the nonpregnant setting to CVD. It is possible that the degree of abnormality could be relevant to later life CVD. Specific to pregnancy, maternal circulating angiogenic and antiangiogenic biomarkers are dysregulated in placenta-related pregnancy disorders.⁷⁶ Elevated circulating sFlt1 and low PIGF in pregnancy may have potential as predictors also of long-term CVD many years after pregnancy; a high sFlt1:PIGF ratio might direct postpartum interventions to those with greatest need. This hypothesis is readily testable in cohorts with postpartum clinical cardiovascular follow-up data.

Outside pregnancy, a high circulating PIGF (assumed to be endothelial derived) is related to an increase in CVD events but has only been investigated in elderly women with a previous CVD event.⁹⁰ There is little data on the associations between pregnancy and postpartum sFlt1 or PIGF levels and not known if they play a role as potential biomarkers of future CVD risk. A continuing search for guidance of stratification by preeclampsia biomarkers is an important target for future research.

Therapeutic Strategies to Reduce Long-Term Risk for CVD

Both the American College of Obstetricians and Gynecologists⁸ and the UK National Institute for Health and Clinical Excellence⁹¹ guidelines include advice for women after pregnancy complications associated with increased CVD risk to keep a healthy weight, engage in increased physical activity, and refrain from smoking (Table S1). The impact of short-term prolongation of a severely preeclamptic pregnancy, or of more aggressive antihypertensive therapy during pregnancy, on the risk for future maternal CVD is uncertain. Also, the independent effect of a further pregnancy is not known, either if it is normal or complicated by recurrent preeclampsia. Because the early stages of atherosclerosis are reversible, it is possible that prompt postpartum intervention (eg, with statins, metformin, platelet inhibitors/anti-inflammatory drugs, such as low-dose aspirin, angiotensin-converting-enzyme inhibitors, or angiotensin receptor blockers) could reduce CVD risk. But, currently, there is no evidence in favor of any intervention whether reserved for the highest risk groups or more widely applied.

Use of Existing Pregnancy Cohorts and Research Biobanks

Collaboration between researchers who have existing pregnancy cohorts and biobanks across the world is a necessary prerequisite to solving the problems identified. By prolonging follow-up, using standardized protocols and combining data, it should be possible to establish if pregnancy or postpartum

biomarker measurement can help stratify risk in seemingly healthy parous women whose pregnancy outcomes identify them as at risk for CVD. Angiogenic factors measured in pregnancy and postpartum⁷⁸ and related factors should be evaluated as CVD risk assessment tools, and -omics strategies could be used to identify new candidate risk or pathophysiological factors. Such large data sets, with data collected in a unified way across multiple institutions and nations, could be a powerful guide to future intervention trials aimed at reducing the global burden of CVD.

Potential Pregnancy Biobanks for Long-Term Cardiovascular Follow-Up

The Global Pregnancy Collaboration (CoLab) (<https://pre-empt.cfri.ca/colaboratory>) includes 30 international member centers, with data from >300 000 pregnancies and biological materials from 20 000 pregnancies. The goal is to provide conclusive and globally generalizable insight into disorders of pregnancy. The CoLab initiative has published recommendations for standardizing clinical data and sample collection in studies of preeclampsia.^{92,93} It is also undertaking a pooling of individual measurements of placentally associated biomarkers analyzed in 28 different cohorts worldwide.⁹⁴

Several of the contributing pregnancy registries and biobanks within the CoLab network are undertaking or planning long-term follow-up of maternal disease remote from pregnancy. Data and samples have been usually acquired during pregnancy, and only rarely before pregnancy. The Dutch Generation R study has followed a large population-based cohort of women and their offspring after pregnancy.⁹⁵⁻⁹⁷ Another, the Norwegian MoBa study^{98,99} including >70 000 women and 100 000 pregnancies also has a long-term follow-up goal. One longitudinal United Kingdom study, OxWatch,¹⁰⁰ is studying women from before pregnancy, during pregnancy, and beyond. The Preeclampsia Registry, developed and managed by the Preeclampsia Foundation and associated with CoLab, is accepting participants worldwide and has currently enrolled 2000 women, most of whom have had preeclampsia. The database also includes nulliparous and parous sisters, other family members, and controls.

Harmonization of Databases

The ability to merge the data or samples from different studies is limited by the heterogeneity in how and which data are collected, as well as in the frequencies and intervals of clinical follow-up. CoLab is developing an online clinical database, originally for prospective studies of preeclampsia, which will standardize collection of appropriate data for pregnancy research and will be available for general use in 2016. It follows up on previously recommended minimal and optimal data sets for preeclampsia research⁹² and will facilitate pooling of data from such new prospective studies. The principle of harmonization of study data can be extended to all other long-term health outcomes after pregnancy, uncomplicated or complicated. Any research study related to human pregnancy information (both within and outside the CoLab organization) is encouraged to register their pregnancy and long-term follow-up research study at an open web platform (www.linkregistry.org), to promote research collaboration across studies.

Table. Harmonization of Research Studies for Future CVD Follow-Up in Low-Risk Young Women

Visit	Clinical Information	Biological Samples for Research Biobanking	CV Risk Phenotyping
Pregestational	Family history of CVD: CVD/CVD death in firstst-degree relative, type of CVD, age at time of diagnosis or death*	Blood (plasma and serum) and urine sampling†	BP, measured and reported according to accepted guidelines*
	Basics (physical, anthropological and ethnographic data): age, height, and weight (body mass index) and waist/hip ratio*		Blood screen for dyslipidemia (total cholesterol, LDL cholesterol, and HDL cholesterol) and diabetes mellitus (fasting blood glucose or HbA1c)*
	Smoking history (never, irregularly, regularly use, current use): cigarette/cigar or snuff or chews tobacco/nicotine*		Urine screen: protein (and hematuria/glucosuria)*
	Medical history: hypertension, cardiac disease, stroke, renal disease, pregestational diabetes mellitus (type and treatment), collagen vascular disease, systemic lupus erythematosus, obstructive sleep apnea*		
	Obstetric history (gravidity, parity: indicate numbers and gestational age at deliveries): miscarriage, stillbirth, abortions (induced/spontaneous); pregnancy-induced hypertension, preeclampsia, eclampsia, HELLP, small for gestational age/fetal growth restriction, GDM (treatment type), preterm delivery (<37 wk), neonatal death, placental weights*		
	Self-described ethnicity (white, black, Asian, Hispanic, unknown, or other [mixed])*		Cardiovascular phenotyping 1: Macrovasculature function (endothelial function and arterial stiffness) and structure (carotid imaging)†
	Years of schooling/other socioeconomic indicator†		Cardiovascular phenotyping 2: microvasculature (rarefaction)†
	Maternal/paternal (and grandparent) country of birth†		Cardiovascular phenotyping 3: echocardiography†
	Physical activity (IPAQ) and diet questionnaires†		Oral glucose tolerance test (OGT)/HOMA score†
	Breast feeding history (duration and after how many pregnancies?)†		
Pregnancies (all trimesters preferably)	Updated family history of CVD, basics, smoking, medical/obstetric history (as in pregestational visit above)*:	Longitudinal blood (plasma and serum) and urine sampling, according to Myatt et al ⁹² †	BP, measured and reported according to accepted guidelines (Supplemental references in the online-only Data Supplement for pregnancy BP)*
	Pregnancy clinical information, including maternal/fetal outcome and placenta variables ⁹² *	Placental sampling, according to Burton et al ⁹³ †	Urine screen: protein (and hematuria/glucosuria and UTI screen). Albumin/creatinine ratio (longitudinal, until positive diagnosis of proteinuria/preeclampsia)* OGT/HOMA score*
	US registrations from pregnancy: uteroplacental Doppler blood flow findings and fetal growth measurements†		Cardiovascular phenotyping:1–3 (as above)†
Postpartum (6–12 wk, 6 mo, and 1 y after index pregnancy, then every 5th year)	Update of family history of CVD, basics, smoking, medical/obstetric history (as in pregestational visit above)*	Blood (plasma and serum) and urine sampling†	BP, measured and reported according to accepted guidelines*
	Physical activity (IPAQ) and diet questionnaires†		Urine screen: protein (and hematuria/glucosuria)*
	Breast feeding history (duration)†		Blood screen for dyslipidemia (total cholesterol, LDL cholesterol, HDL cholesterol), and diabetes mellitus (fasting blood glucose or HbA1c)* Oral glucose tolerance test (3–6 mo postpartum after GDM is recommended clinically)† Cardiovascular phenotyping: 1–3 (as above)†

BP indicates blood pressure; CVD, cardiovascular disease; GDM, gestational diabetes mellitus; HbA1c, hemoglobin A1c; HDL, high-density lipoprotein; HELLP, hemolysis, elevated liver enzymes, low platelets; HOMA, homeostasis model assessment; IPAQ, International Physical Activity Questionnaire; LDL, low-density lipoprotein; and UTI, urinary tract infection.

*Minimal data set.

†Extended data set.

Ideal Cohort to Study Remote CVD After Pregnancies

An option, although costly, is to construct a new international, prospective, longitudinal, research cohort, which would commence before pregnancy, and follow women longitudinally over many years to include the hard end points of CVD (eg, death, stroke, and myocardial infarct). Such a cohort should be global in every sense. This International Longitudinal Women's Health Cohort will be challenging to fund and administer. Even without such a large formal cohort, we encourage that our recommendations of data storage harmonization are adopted for smaller individual studies to facilitate study linkages at a later date.

Minimal and Extended Follow-Up Research Data Set for Future CVD After Pregnancy

The Table summarizes our suggestions for a minimal and extended research data set for studying long-term cardiovascular health after pregnancy, including suggestions for cardiovascular phenotyping, collection of general health assessments, and pregnancy information. Recruitment should not only be limited to women at elevated risk for CVD but also to uncomplicated pregnancies. Ideally, recruitment should be population based. The suggested follow-up in the Table focuses specifically on CVD but could be modified to meet the needs of different health outcomes after pregnancy, such as renal, thyroid, neurodegenerative, or psychiatric disease. Such studies could hopefully identify suitable time points for cost-efficient analyses of the follow-up of (apparently) healthy parous women after pregnancy complications.

In contrast, women in high-income countries who have clinical evidence of CVD, either prepregnancy, during pregnancy, or postpartum, would be followed up by a specialist (eg, a cardiologist), with clinical strategies that need individualization and may differ from the suggested research oriented suggestion of the Table. Women with prepregnancy diabetes mellitus or renal disease should be offered appropriate specialist follow-up postpartum, whatever pregnancy complications, to reduce the risk for end-stage organ damage.

It is important that the data collected and the timing of collection in follow-up studies are similar across different studies (Table). We suggest that follow-up research studies after pregnancy obtain a clinical history, including data on smoking, hypertension and diabetes mellitus, obstetric history and length of breast feeding from all pregnancies,⁹² and family history of CVD risk factors. In addition, we suggest a minimal clinical assessment including blood pressure measurement and testing for insulin resistance (with fasting blood glucose as a first screening¹ or HbA1c or the more labor extensive oral glucose testing or homeostasis model assessment score for the extended data set). Our suggested testing for other risk factors for CVD, such as renal disease (urine dipstick for proteinuria as a first screening or albumin/creatinine ratio), body mass index, total cholesterol, low-density lipoprotein cholesterol, high-density lipoprotein -cholesterol, is consistent with CVD risk screening recommended by the American Heart Association.¹ The Table presents a minimal data set and an extended data set for research follow-up. The minimal data

set is chosen as information that can be collected also in low-resource setting, in recognition of the necessity of information specific to settings with the highest rates of pregnancy complications and deaths from these conditions.

An extended follow-up research plan for CVD includes more detailed cardiovascular phenotyping as well as blood sampling for research purposes. Currently, there is no biomarker that is known to precisely predict future CVD in young and symptom-free women, who have normal kidney function, blood sugar, lipids, and blood pressure, and therefore, adequate samples for various analytic options should be collected. Sampling and storage of biological material (blood, placenta, possibly urine and feces, and other material) would cover a broad range of analytic options and biomarker discovery, including options for -omics (metabolomics, etc.). ¹H nuclear magnetic resonance metabolomics (a form of metabolomics related to nutrition) could, for example, explore atherosclerotic and CVD pathophysiology.¹⁰¹ Supplemental Data S2 in the online-only Data Supplement details the current most sensible options for extended cardiovascular phenotyping in a long-term follow-up clinical research setting, provided the necessary skill base is available. Linking imaging and physiological phenotypes with later health outcomes, similar to approaches being used in large-scale longitudinal cohorts, such as UK Biobank,¹⁰² may also identify novel vascular or cardiac risk markers that predict which women are at greatest risk for later CVD.⁵ Such studies typically use a comprehensive approach that captures data on a broad range of cardiovascular parameters and often include assessment of other related systems through metabolic, bone, cerebral, or renal imaging and assessment. We recognize that many pregnancy-associated research centers may have specialist experience or equipment for evaluation of only one, or a few, of these different areas but, through a collaborative approach, centers with similar data could be linked to generate combined data sets. In addition, there are some noninvasive techniques that do not require major infrastructure and so are widely available across multiple sites. Supplemental File S2 considers these common noninvasive techniques that could be incorporated into an extended follow-up data set for research purpose and would allow comprehensive assessment across the woman's macrovasculature (both functional and structural investigations), microvasculature, and heart.

Time Points for Measurement and Frequency of Postpartum Research Follow-Up Visits

The optimal time points for measurements of cardiovascular variables in longitudinal follow-up cohorts are unknown. Prepregnancy measures will be invaluable to discriminate those cardiovascular changes that predispose to pregnancy outcomes as opposed to those developing or aggravated by pregnancy itself. However, the challenges of a prepregnancy cohort include that women do not always plan their pregnancies, nor do pregnancies necessarily occur when planned. Thus, the time between prepregnancy testing and the subsequent pregnancy will vary. Because vascular measures change with age, the gap between the time of measurement and the index pregnancy may reduce the value of the prepregnancy measure. It is not known whether or when in pregnancy vascular phenotyping would be most relevant for unmasking the

most reliable risk for long-term CVD. Until this question is resolved, testing could ideally be done in early, mid, and late pregnancy and, if possible, in the case of preeclampsia, when the woman manifests the clinical signs.

The frequency of the suggested clinical research follow-up after pregnancy should be standardized to allow determination of the natural history of the progression to CVD. Potential clinical findings at the follow-up will likely vary between premenopausal and postmenopausal women. Postmenopausal women have a higher short-time CVD risk, with greater disease prevalence. However, identifying increased risk in younger women would be optimal to prevent CVD, favoring more frequent and regular examinations of younger and clinically healthy women. For harmonizing purposes, we suggest a first 6 to 12 weeks postpartum follow-up after pregnancy, as this timing is used clinically today as a routine check-up after pregnancy in many countries. Thereafter, we suggest a 6-month and 1-year follow-up, with subsequent follow-up at least every 5 years for the clinically healthy women. If evidence of clinical CVD is found in this research setting, appropriate clinical and specialist follow-up is, of course, recommended. Importantly, even if the resources are not available for such work-intensive follow-up, we strongly recommend studies be designed to allow coupling of pregnancy data from the recruited women to other potential registries or patient databases documenting clinical (including hard) CVD end points.

Several countries currently offer population-based health screening programs, such as screening for cervical and breast cancer, which are assumed to be cost-effective. However, CVD is the greatest cause of death and years of life lost in the world,¹⁰³ yet no screening is offered due to lack of evidence for its efficiency. To increase patient compliance and to secure a cost-efficient follow-up of CVD screening, our suggested minimal data set follow-up could be adapted to such pre-existing screening programs, providing added value without much extra cost. This may be a payer issue in countries without government-provided health care, which needs to be taken on by professional and consumer organizations as an advocacy initiative.

Women's Involvement in Long-Term Follow-Up for CVD

The involvement of women with relevant pregnancy experience in the development of these research programs is underappreciated, but important and enlightening.¹⁰⁴ We, therefore, recommend that this research initiative is developed with continuing discussion with appropriate patient groups to ensure that their views are fully expressed and incorporated into research planning. Patient-run organizations, such as in the United States (www.preeclampsia.org), United Kingdom (www.action-on-pre-eclampsia.org.uk), and Australia (www.aapc.org.au), actively support preeclampsia research and long-term follow-up for CVD. These organizations have a key role in updating women about the evidence for risks of CVD in relation to their pregnancy histories, even though women cannot expect routine follow-up without sound evidence that this is beneficial. But women can strengthen the call for more and better research to gain the evidence. They can also help to update health personnel

who are still relatively unfamiliar with the association of future CVD with pregnancy complications.¹⁰⁵ They can demand that hospitals provide more and better patient-oriented information regarding long-term CVD risk after pregnancy complications (eg, www.themothersprogram.ca).

Supporting patient involvement should increase compliance with current (well-meant but often ignored) advice on weight control, smoking cessation, and management of additional CVD risk factors (eg, diabetes mellitus and hyperlipidemia). The current United States⁸ and United Kingdom¹⁰⁶ advice on patient-oriented recommendations is general. More CVD follow-up research is needed to enable better and more specific recommendations.

Translation into Clinical Practice

We hope that, in the future, the longitudinal research studies, described here, will be translated into widely practiced, evidence-based routines of clinical follow-up, for selected women who have had complicated pregnancies. A suggested template is given in Figure S1 in the online-only Data Supplement. Resolution of the outstanding research issues that have been identified in this article could identify which biomarkers would help to refine recommendations for, and timing of, the follow-ups and maximize health outcomes cost effectively. This or a similar template could be adapted to differing health systems and even linked to other established screening programs, for example, those for cervical and breast cancer.

Perspectives

Despite a clearly documented increased risk for CVD after pregnancy complicated by placental dysfunction or GDM, our understanding of the underlying mechanisms is poor. It is also not clear how to appropriately target preventive strategies to the women at highest risk and what interventions are likely to confer benefit. More long-term research programs are needed particularly to discriminate between the specific effects of pregnancy and prepregnancy risk factors on future maternal CVD.

The need for adequately powered, large, longitudinal studies is identified as a critical issue. These are expensive and difficult to achieve in isolation. Progress will be faster if data and samples are collected in such a way that separate studies can be combined to achieve collaboratively determined goals that are otherwise unattainable. This would be powerfully facilitated by preagreed harmonization of research protocols to ensure that important data and samples can be readily pooled. We suggest a provisional format for such harmonization and encourage discussion, between those involved, to refine its design. In addition, to address the crucial question of the role of prepregnancy risk factors, we promote the concept of a new International Longitudinal Women's Health Cohort. It should then become possible to validate markers of long-term CVD in young women and identify new therapeutic targets for intervention, in collaboration with clinical experts on CVD. Better surrogate markers, singly or in combination, for long-term CVD in young women will enable targeted testing of primary prophylactic agents many decades before the first, and possibly lethal, evidence of atherosclerosis and CVD.

Appendix

Anne Cathrine Staff, Christopher W.G. Redman, Per Magnus, Eric A.P. Steegers, Eleni Z. Tsigas, Leslie Myatt, Lucilla Poston, and James M. Roberts are members of the Global Pregnancy Collaboration (CoLab) consortium.

Acknowledgments

We are grateful for support of the CoLab organization by The Melinda and Bill Gates Foundation.

Sources of Funding

This study was supported by the Melinda and Bill Gates Foundation.

Disclosures

None.

References

- Mosca L, Benjamin EJ, Berra K, et al. Effectiveness-based guidelines for the prevention of cardiovascular disease in women—2011 update: a guideline from the American Heart Association. *Circulation*. 2011;123:1243–1262. doi: 10.1161/CIR.0b013e31820faaf8.
- Sattar N, Greer IA. Pregnancy complications and maternal cardiovascular risk: opportunities for intervention and screening? *BMJ*. 2002;325:157–160.
- Rich-Edwards JW. Reproductive health as a sentinel of chronic disease in women. *Womens Health (Lond Engl)*. 2009;5:101–105. doi: 10.2217/17455057.5.2.101.
- Roberts JM, Hubel CA. Pregnancy: a screening test for later life cardiovascular disease. *Womens Health Issues*. 2010;20:304–307. doi: 10.1016/j.whi.2010.05.004.
- Mosca L, Benjamin EJ, Berra K, et al; American Heart Association. Effectiveness-based guidelines for the prevention of cardiovascular disease in women—2011 update: a guideline from the American Heart Association. *J Am Coll Cardiol*. 2011;57:1404–1423. doi: 10.1016/j.jacc.2011.02.005.
- Lawton JS. Sex and gender differences in coronary artery disease. *Semin Thorac Cardiovasc Surg*. 2011;23:126–130. doi: 10.1053/j.semtcvs.2011.07.006.
- Vaccarino V, Parsons L, Every NR, Barron HV, Krumholz HM. Sex-based differences in early mortality after myocardial infarction. National Registry of Myocardial Infarction 2 Participants. *N Engl J Med*. 1999;341:217–225. doi: 10.1056/NEJM199907223410401.
- American College of Obstetricians and Gynecologists; Task Force on Hypertension in Pregnancy. Hypertension in pregnancy. Report of the American College of Obstetricians and Gynecologists' task force on hypertension in pregnancy. *Obstet Gynecol*. 2013;122:1122–1131. doi: 10.1097/01.AOG.0000437382.03963.88.
- Redman CW, Sargent IL, Staff AC. IFPA Senior Award Lecture: making sense of pre-eclampsia—two placental causes of preeclampsia? *Placenta*. 2014;35:S20–S25. doi: 10.1016/j.placenta.2013.12.008.
- Irgens HU, Reisaeter L, Irgens LM, Lie RT. Long term mortality of mothers and fathers after pre-eclampsia: population based cohort study. *BMJ*. 2001;323:1213–1217.
- Smith GC, Pell JP, Walsh D. Pregnancy complications and maternal risk of ischaemic heart disease: a retrospective cohort study of 129,290 births. *Lancet*. 2001;357:2002–2006. doi: 10.1016/S0140-6736(00)05112-6.
- Lykke JA, Langhoff-Roos J, Sibai BM, Funai EF, Triche EW, Paidas MJ. Hypertensive pregnancy disorders and subsequent cardiovascular morbidity and type 2 diabetes mellitus in the mother. *Hypertension*. 2009;53:944–951. doi: 10.1161/HYPERTENSIONAHA.109.130765.
- Bellamy L, Casas JP, Hingorani AD, Williams DJ. Pre-eclampsia and risk of cardiovascular disease and cancer in later life: systematic review and meta-analysis. *BMJ*. 2007;335:974. doi: 10.1136/bmj.39335.385301.BE.
- Wikström AK, Haglund B, Olovsson M, Lindeberg SN. The risk of maternal ischaemic heart disease after gestational hypertensive disease. *BJOG*. 2005;112:1486–1491. doi: 10.1111/j.1471-0528.2005.00733.x.
- Ness RB, Sibai BM. Shared and disparate components of the pathophysiology of fetal growth restriction and preeclampsia. *Am J Obstet Gynecol*. 2006;195:40–49. doi: 10.1016/j.ajog.2005.07.049.
- Newstead J, von Dadelszen P, Magee LA. Preeclampsia and future cardiovascular risk. *Expert Rev Cardiovasc Ther*. 2007;5:283–294. doi: 10.1586/14779072.5.2.283.
- Mongraw-Chaffin ML, Cirillo PM, Cohn BA. Preeclampsia and cardiovascular disease death: prospective evidence from the child health and development studies cohort. *Hypertension*. 2010;56:166–171. doi: 10.1161/HYPERTENSIONAHA.110.150078.
- Ness RB, Hubel CA. Risk for coronary artery disease and morbid preeclampsia: a commentary. *Ann Epidemiol*. 2005;15:726–733. doi: 10.1016/j.annepidem.2005.02.007.
- Harskamp RE, Zeeman GG. Preeclampsia: at risk for remote cardiovascular disease. *Am J Med Sci*. 2007;334:291–295. doi: 10.1097/MAJ.0b013e3180a6f094.
- Ray JG, Vermeulen MJ, Schull MJ, Redelmeier DA. Cardiovascular health after maternal placental syndromes (CHAMPS): population-based retrospective cohort study. *Lancet*. 2005;366:1797–1803. doi: 10.1016/S0140-6736(05)67726-4.
- Lazdam M, de la Horra A, Diesch J, Kenworthy Y, Davis E, Lewandowski AJ, Szmigielski C, Shore A, Mackillop L, Kharbanda R, Alp N, Redman C, Kelly B, Leeson P. Unique blood pressure characteristics in mother and offspring after early onset preeclampsia. *Hypertension*. 2012;60:1338–1345. doi: 10.1161/HYPERTENSIONAHA.112.198366.
- Veerbeek JH, Hermes W, Breimer AY, van Rijn BB, Koenen SV, Mol BW, Franx A, de Groot CJ, Koster MP. Cardiovascular disease risk factors after early-onset preeclampsia, late-onset preeclampsia, and pregnancy-induced hypertension. *Hypertension*. 2015;65:600–606. doi: 10.1161/HYPERTENSIONAHA.114.04850.
- Robbins CL, Hutchings Y, Dietz PM, Kuklina EV, Callaghan WM. History of preterm birth and subsequent cardiovascular disease: a systematic review. *Am J Obstet Gynecol*. 2014;210:285–297. doi: 10.1016/j.ajog.2013.09.020.
- Catov JM, Wu CS, Olsen J, Sutton-Tyrrell K, Li J, Nohr EA. Early or recurrent preterm birth and maternal cardiovascular disease risk. *Ann Epidemiol*. 2010;20:604–609. doi: 10.1016/j.annepidem.2010.05.007.
- Romero R, Dey SK, Fisher SJ. Preterm labor: one syndrome, many causes. *Science*. 2014;345:760–765. doi: 10.1126/science.1251816.
- Bonamy AK, Parikh NI, Cnattingius S, Ludvigsson JF, Ingelsson E. Birth characteristics and subsequent risks of maternal cardiovascular disease: effects of gestational age and fetal growth. *Circulation*. 2011;124:2839–2846. doi: 10.1161/CIRCULATIONAHA.111.034884.
- Oliver-Williams CT, Heydon EE, Smith GC, Wood AM. Miscarriage and future maternal cardiovascular disease: a systematic review and meta-analysis. *Heart*. 2013;99:1636–1644. doi: 10.1136/heartjnl-2012-303237.
- Germain AM, Romanik MC, Guerra I, Solari S, Reyes MS, Johnson RJ, Price K, Karumanchi SA, Valdés G. Endothelial dysfunction: a link among preeclampsia, recurrent pregnancy loss, and future cardiovascular events? *Hypertension*. 2007;49:90–95. doi: 10.1161/01.HYP.0000251522.18094.d4.
- Sheiner E, Levy A, Katz M, Mazor M. Pregnancy outcome following recurrent spontaneous abortions. *Eur J Obstet Gynecol Reprod Biol*. 2005;118:61–65. doi: 10.1016/j.ejogrb.2004.06.015.
- Veerbeek JH, Smit JG, Koster MP, Post Uiterweer ED, van Rijn BB, Koenen SV, Franx A. Maternal cardiovascular risk profile after placental abruption. *Hypertension*. 2013;61:1297–1301. doi: 10.1161/HYPERTENSIONAHA.111.00930.
- Shah BR, Retnakaran R, Booth GL. Increased risk of cardiovascular disease in young women following gestational diabetes mellitus. *Diabetes Care*. 2008;31:1668–1669. doi: 10.2337/dc08-0706.
- Metzger BE, Cho NH, Roston SM, Radvany R. Prepregnancy weight and antepartum insulin secretion predict glucose tolerance five years after gestational diabetes mellitus. *Diabetes Care*. 1993;16:1598–1605.
- Bellamy L, Casas JP, Hingorani AD, Williams D. Type 2 diabetes mellitus after gestational diabetes: a systematic review and meta-analysis. *Lancet*. 2009;373:1773–1779. doi: 10.1016/S0140-6736(09)60731-5.
- Weissgerber TL, Mudd LM. Preeclampsia and diabetes. *Curr Diab Rep*. 2015;15:9. doi: 10.1007/s11892-015-0579-4.
- Briasoulis A, Bakris GL. Chronic kidney disease as a coronary artery disease risk equivalent. *Curr Cardiol Rep*. 2013;15:340. doi: 10.1007/s11886-012-0340-4.
- Dekker JM, Schouten EG. Number of pregnancies and risk of cardiovascular disease. *N Engl J Med*. 1993;329:1893–1894; author reply 1894.
- Green A, Beral V, Moser K. Mortality in women in relation to their child-bearing history. *BMJ*. 1988;297:391–395.
- Lawlor DA, Emberson JR, Ebrahim S, Whincup PH, Wannamethee SG, Walker M, Smith GD; British Women's Heart and Health Study; British Regional Heart Study. Is the association between parity and coronary heart disease due to biological effects of pregnancy or adverse lifestyle risk factors associated with child-rearing? Findings from the British Women's Heart and Health Study and the British Regional Heart Study. *Circulation*. 2003;107:1260–1264.

39. Ness RB, Harris T, Cobb J, Flegal KM, Kelsey JL, Balanger A, Stunkard AJ, D'Agostino RB. Number of pregnancies and the subsequent risk of cardiovascular disease. *N Engl J Med.* 1993;328:1528–1533. doi: 10.1056/NEJM199305273282104.
40. Parikh NI, Cnattingius S, Dickman PW, Mittleman MA, Ludvigsson JF, Ingelsson E. Parity and risk of later-life maternal cardiovascular disease. *Am Heart J.* 2010;159:215–221.e6. doi: 10.1016/j.ahj.2009.11.017.
41. Colditz GA, Willett WC, Stampfer MJ, Rosner B, Speizer FE, Hennekens CH. A prospective study of age at menarche, parity, age at first birth, and coronary heart disease in women. *Am J Epidemiol.* 1987;126:861–870.
42. Steenland K, Lally C, Thun M. Parity and coronary heart disease among women in the American Cancer Society CPS II population. *Epidemiology.* 1996;7:641–643.
43. Ness RB, Cobb J, Harris T, D'Agostino RB. Does number of children increase the rate of coronary heart disease in men? *Epidemiology.* 1995;6:442–445.
44. Halland F, deRoo L, Morken NH, Klungsoyr K, Wilcox AJ, Skjaerven R. Association of women's reproductive history with long-term mortality and effect of socioeconomic factors. *Obstet Gynecol.* 2015;126:1181–1187. doi: 10.1097/AOG.0000000000001155.
45. Parikh NI, Cnattingius S, Mittleman MA, Ludvigsson JF, Ingelsson E. Subfertility and risk of later life maternal cardiovascular disease. *Hum Reprod.* 2012;27:568–575. doi: 10.1093/humrep/der400.
46. Rich-Edwards JW, Fraser A, Lawlor DA, Catov JM. Pregnancy characteristics and women's future cardiovascular health: an underused opportunity to improve women's health? *Epidemiol Rev.* 2014;36:57–70. doi: 10.1093/epirev/mxt006.
47. Eskild A, Romundstad PR, Vatten LJ. Placental weight and birth-weight: does the association differ between pregnancies with and without preeclampsia? *Am J Obstet Gynecol.* 2009;201:595.e1–595.e5. doi: 10.1016/j.ajog.2009.06.003.
48. Risnes KR, Romundstad PR, Nilsen TI, Eskild A, Vatten LJ. Placental weight relative to birth weight and long-term cardiovascular mortality: findings from a cohort of 31,307 men and women. *Am J Epidemiol.* 2009;170:622–631. doi: 10.1093/aje/kwp182.
49. Schwarz EB, Ray RM, Stuebe AM, Allison MA, Ness RB, Freiberg MS, Cauley JA. Duration of lactation and risk factors for maternal cardiovascular disease. *Obstet Gynecol.* 2009;113:974–982. doi: 10.1097/01.AOG.0000346884.67796.ca.
50. Liu LX, Arany Z. Maternal cardiac metabolism in pregnancy. *Cardiovasc Res.* 2014;101:545–553. doi: 10.1093/cvr/cvu009.
51. Broere-Brown ZA, Schalekamp-Timmermans S, Hofman A, Jaddoe V, Steegers E. Fetal sex dependency of maternal vascular adaptation to pregnancy: a prospective population-based cohort study [published online ahead of print July 14, 2015]. *BJOG.* doi: 10.1111/1471-0528.13519. <http://onlinelibrary.wiley.com/doi/10.1111/1471-0528.13519/full>. Accessed December 9, 2015.
52. Parikh NI, Lloyd-Jones DM, Ning H, Ouyang P, Polak JF, Lima JA, Bluemke D, Mittleman MA. Association of number of live births with left ventricular structure and function. The Multi-Ethnic Study of Atherosclerosis (MESA). *Am Heart J.* 2012;163:470–476. doi: 10.1016/j.ahj.2011.12.011.
53. Martin U, Davies C, Hayavi S, Hartland A, Dunne F. Is normal pregnancy atherogenic? *Clin Sci (Lond).* 1999;96:421–425.
54. Ness RB, Roberts JM. Heterogeneous causes constituting the single syndrome of preeclampsia: a hypothesis and its implications. *Am J Obstet Gynecol.* 1996;175:1365–1370.
55. Buurma AJ, Turner RJ, Driessen JH, Mooyaart AL, Schoones JW, Bruijn JA, Bloemenkamp KW, Dekkers OM, Baelde HJ. Genetic variants in preeclampsia: a meta-analysis. *Hum Reprod Update.* 2013;19:289–303. doi: 10.1093/humupd/dms060.
56. Johnson MP, Brennecke SP, East CE, et al; FINNPEC Study Group. Genetic dissection of the pre-eclampsia susceptibility locus on chromosome 2q22 reveals shared novel risk factors for cardiovascular disease. *Mol Hum Reprod.* 2013;19:423–437. doi: 10.1093/molehr/gat011.
57. Redman CW, Sacks GP, Sargent IL. Preeclampsia: an excessive maternal inflammatory response to pregnancy. *Am J Obstet Gynecol.* 1999;180(2 pt 1):499–506.
58. Ross R. Atherosclerosis is an inflammatory disease. *Am Heart J.* 1999;138(5 pt 2):S419–S420.
59. Ross R. Atherosclerosis—an inflammatory disease. *N Engl J Med.* 1999;340:115–126. doi: 10.1056/NEJM199901143400207.
60. Rosing U, Samsioe G, Olund A, Johansson B, Kallner A. Serum levels of apolipoprotein A-I, A-II and HDL-cholesterol in second half of normal pregnancy and in pregnancy complicated by pre-eclampsia. *Horm Metab Res.* 1989;21:376–382. doi: 10.1055/s-2007-1009242.
61. Hubel CA, Lyall F, Weissfeld L, Gandle RE, Roberts JM. Small low-density lipoproteins and vascular cell adhesion molecule-1 are increased in association with hyperlipidemia in preeclampsia. *Metabolism.* 1998;47:1281–1288.
62. Sattar N, Bedomir A, Berry C, Shepherd J, Greer IA, Packard CJ. Lipoprotein subfraction concentrations in preeclampsia: pathogenic parallels to atherosclerosis. *Obstet Gynecol.* 1997;89:403–408. doi: 10.1016/S0029-7844(96)00514-5.
63. Wetzka B, Winkler K, Kinner M, Friedrich I, März W, Zahradnik HP. Altered lipid metabolism in preeclampsia and HELLP syndrome: links to enhanced platelet reactivity and fetal growth. *Semin Thromb Hemost.* 1999;25:455–462. doi: 10.1055/s-2007-994950.
64. Ware-Jauregui S, Sanchez SE, Zhang C, Laraburre G, King IB, Williams MA. Plasma lipid concentrations in pre-eclamptic and normotensive Peruvian women. *Int J Gynaecol Obstet.* 1999;67:147–155.
65. Staff AC, Dechend R, Pijnenborg R. Learning from the placenta: acute atherosclerosis and vascular remodeling in preeclampsia—novel aspects for atherosclerosis and future cardiovascular health. *Hypertension.* 2010;56:1026–1034. doi: 10.1161/HYPERTENSIONAHA.110.157743.
66. Barden A. Pre-eclampsia: contribution of maternal constitutional factors and the consequences for cardiovascular health. *Clin Exp Pharmacol Physiol.* 2006;33:826–830. doi: 10.1111/j.1440-1681.2006.04448.x.
67. Wikström AK, Stephansson O, Cnattingius S. Tobacco use during pregnancy and preeclampsia risk: effects of cigarette smoking and snuff. *Hypertension.* 2010;55:1254–1259. doi: 10.1161/HYPERTENSIONAHA.109.147082.
68. Cudmore M, Ahmad S, Al-Ani B, Fujisawa T, Coxall H, Chudasama K, Devey LR, Wigmore SJ, Abbas A, Hewett PW, Ahmed A. Negative regulation of soluble Flt-1 and soluble endoglin release by heme oxygenase-1. *Circulation.* 2007;115:1789–1797. doi: 10.1161/CIRCULATIONAHA.106.660134.
69. Jeyabalan A, Powers RW, Durica AR, Harger GF, Roberts JM, Ness RB. Cigarette smoke exposure and angiogenic factors in pregnancy and preeclampsia. *Am J Hypertens.* 2008;21:943–947. doi: 10.1038/ajh.2008.219.
70. Magnussen EB, Vatten LJ, Lund-Nilsen TI, Salvesen KA, Davey Smith G, Romundstad PR. Prepregnancy cardiovascular risk factors as predictors of pre-eclampsia: population based cohort study. *BMJ.* 2007;335:978. doi: 10.1136/bmj.39366.416817.BE.
71. Magnussen EB, Vatten LJ, Smith GD, Romundstad PR. Hypertensive disorders in pregnancy and subsequently measured cardiovascular risk factors. *Obstet Gynecol.* 2009;114:961–970. doi: 10.1097/AOG.0b013e3181bb0dfc.
72. Romundstad PR, Magnussen EB, Smith GD, Vatten LJ. Hypertension in pregnancy and later cardiovascular risk: common antecedents? *Circulation.* 2010;122:579–584. doi: 10.1161/CIRCULATIONAHA.110.943407.
73. Staff AC, Dechend R, Redman CW. Review: preeclampsia, acute atherosclerosis of the spiral arteries and future cardiovascular disease: two new hypotheses. *Placenta.* 2013;34:S73–S78. doi: 10.1016/j.placenta.2012.11.022.
74. Melchiorre K, Sharma R, Thilaganathan B. Cardiovascular implications in preeclampsia: an overview. *Circulation.* 2014;130:703–714. doi: 10.1161/CIRCULATIONAHA.113.003664.
75. Staff AC, Benton SJ, von Dadelszen P, Roberts JM, Taylor RN, Powers RW, Charnock-Jones DS, Redman CW. Redefining preeclampsia using placenta-derived biomarkers. *Hypertension.* 2013;61:932–942. doi: 10.1161/HYPERTENSIONAHA.111.00250.
76. Kvehaugen AS, Dechend R, Ramstad HB, Troisi R, Fugelseth D, Staff AC. Endothelial function and circulating biomarkers are disturbed in women and children after preeclampsia. *Hypertension.* 2011;58:63–69. doi: 10.1161/HYPERTENSIONAHA.111.172387.
77. Wolf M, Hubel CA, Lam C, Sampson M, Ecker JL, Ness RB, Rajakumar A, Dafitry A, Shakir AS, Seely EW, Roberts JM, Sukhatme VP, Karumanchi SA, Thadhani R. Preeclampsia and future cardiovascular disease: potential role of altered angiogenesis and insulin resistance. *J Clin Endocrinol Metab.* 2004;89:6239–6243. doi: 10.1210/jc.2004-0548.
78. Noori M, Donald AE, Angelakopoulou A, Hingorani AD, Williams DJ. Prospective study of placental angiogenic factors and maternal vascular function before and after preeclampsia and gestational hypertension. *Circulation.* 2010;122:478–487. doi: 10.1161/CIRCULATIONAHA.109.895458.
79. Saxena AR, Karumanchi SA, Brown NJ, Royle CM, McElrath TF, Seely EW. Increased sensitivity to angiotensin II is present postpartum in women with a history of hypertensive pregnancy. *Hypertension.* 2010;55:1239–1245. doi: 10.1161/HYPERTENSIONAHA.109.147595.
80. Hubel CA, Wallukat G, Wolf M, Herse F, Rajakumar A, Roberts JM, Markovic N, Thadhani R, Luft FC, Dechend R. Agonistic angiotensin II type 1 receptor autoantibodies in postpartum women with

- a history of preeclampsia. *Hypertension*. 2007;49:612–617. doi: 10.1161/01.HYP.0000256565.20983.d4.
81. Bytautiene E, Bulayeva N, Bhat G, Li L, Rosenblatt KP, Saade GR. Long-term alterations in maternal plasma proteome after sFlt1-induced preeclampsia in mice. *Am J Obstet Gynecol*. 2013;208:388.e1–388.e10. doi: 10.1016/j.ajog.2013.01.042.
 82. Lin C, Rajakumar A, Plymire DA, Verma V, Markovic N, Hubel CA. Maternal endothelial progenitor colony-forming units with macrophage characteristics are reduced in preeclampsia. *Am J Hypertens*. 2009;22:1014–1019. doi: 10.1038/ajh.2009.101.
 83. Autiero M, Waltenberger J, Communi D, et al. Role of PIGF in the intra- and intermolecular cross talk between the VEGF receptors Flt1 and Flk1. *Nat Med*. 2003;9:936–943. doi: 10.1038/nm884.
 84. Li B, Sharpe EE, Maupin AB, Teleron AA, Pyle AL, Carmeliet P, Young PP. VEGF and PIGF promote adult vasculogenesis by enhancing EPC recruitment and vessel formation at the site of tumor neovascularization. *FASEB J*. 2006;20:1495–1497. doi: 10.1096/fj.05-5137fje.
 85. Melchiorre K, Sutherland GR, Liberati M, Thilaganathan B. Preeclampsia is associated with persistent postpartum cardiovascular impairment. *Hypertension*. 2011;58:709–715. doi: 10.1161/HYPERTENSIONAHA.111.176537.
 86. Kane GC, Karon BL, Mahoney DW, Redfield MM, Roger VL, Burnett JC Jr, Jacobsen SJ, Rodeheffer RJ. Progression of left ventricular diastolic dysfunction and risk of heart failure. *JAMA*. 2011;306:856–863. doi: 10.1001/jama.2011.1201.
 87. Redfield MM, Jacobsen SJ, Burnett JC Jr, Mahoney DW, Bailey KR, Rodeheffer RJ. Burden of systolic and diastolic ventricular dysfunction in the community: appreciating the scope of the heart failure epidemic. *JAMA*. 2003;289:194–202.
 88. Roberts JM, Catov JM. Pregnancy is a screening test for later life cardiovascular disease: now what? Research recommendations. *Womens Health Issues*. 2012;22:e123–e128. doi: 10.1016/j.whi.2012.01.001.
 89. Pinsky JL, Branch LG, Jette AM, Haynes SG, Feinleib M, Cornoni-Huntley JC, Bailey KR. Framingham Disability Study: relationship of disability to cardiovascular risk factors among persons free of diagnosed cardiovascular disease. *Am J Epidemiol*. 1985;122:644–656.
 90. Lenderink T, Heeschen C, Fichtlscherer S, Dimmeler S, Hamm CW, Zeiher AM, Simoons ML, Boersma E; CAPTURE Investigators. Elevated placental growth factor levels are associated with adverse outcomes at four-year follow-up in patients with acute coronary syndromes. *J Am Coll Cardiol*. 2006;47:307–311. doi: 10.1016/j.jacc.2005.08.063.
 91. National Institute for Health and Clinical Excellence. *Hypertension in Pregnancy: the Management of Hypertensive Disorders During Pregnancy (Clinical Guideline 107)*. London: RCOG Press; 2010.
 92. Myatt L, Redman CW, Staff AC, Hansson S, Wilson ML, Laivuori H, Poston L, Roberts JM; Global Pregnancy CoLaboratory. Strategy for standardization of preeclampsia research study design. *Hypertension*. 2014;63:1293–1301. doi: 10.1161/HYPERTENSIONAHA.113.02664.
 93. Burton GJ, Sebire NJ, Myatt L, Tannetta D, Wang YL, Sadovsky Y, Staff AC, Redman CW. Optimising sample collection for placental research. *Placenta*. 2014;35:9–22. doi: 10.1016/j.placenta.2013.11.005.
 94. Burke O, Benton S, Szafranski P, et al. [94-OR]: Extending the scope of individual patient data meta-analyses: merging algorithms for biomarker measurements from heterogeneous laboratory platforms. The CoLAB preeclampsia angiogenic factor study. *Pregnancy Hypertens*. 2015;5:50–51.
 95. Jaddoe VW, Bakker R, van Duijn CM, van der Heijden AJ, Lindemans J, Mackenbach JP, Moll HA, Steegers EA, Tiemeier H, Uitterlinden AG, Verhulst FC, Hofman A. The Generation R Study Biobank: a resource for epidemiological studies in children and their parents. *Eur J Epidemiol*. 2007;22:917–923. doi: 10.1007/s10654-007-9209-z.
 96. Kruihof CJ, Kooijman MN, van Duijn CM, et al. The Generation R Study: biobank update 2015. *Eur J Epidemiol*. 2014;29:911–927. doi: 10.1007/s10654-014-9980-6.
 97. Gishti O, Jaddoe VW, Felix JF, Reiss I, Hofman A, Ikram MK, Steegers EA, Gaillard R. Influence of maternal angiogenic factors during pregnancy on microvascular structure in school-age children. *Hypertension*. 2015;65:722–728. doi: 10.1161/HYPERTENSIONAHA.114.05008.
 98. Rønningen KS, Paltiel L, Meltzer HM, Nordhagen R, Lie KK, Hovengen R, Haugen M, Nystad W, Magnus P, Hoppin JA. The biobank of the Norwegian Mother and Child Cohort Study: a resource for the next 100 years. *Eur J Epidemiol*. 2006;21:619–625. doi: 10.1007/s10654-006-9041-x.
 99. Magnus P, Irgens LM, Haug K, Nystad W, Skjaerven R, Stoltenberg C; MoBa Study Group. Cohort profile: the Norwegian Mother and Child Cohort Study (MoBa). *Int J Epidemiol*. 2006;35:1146–1150. doi: 10.1093/ije/dyl170.
 100. Harrison S, Petrovic G, Chevassut A, Brook L, Higgins N, Kenworthy Y, Selwood M, Snelgar T, Arnold L, Boardman H, Heneghan C, Leeson P, Redman C, Granne I. Oxfordshire Women and Their Children's Health (OxWATCH): protocol for a prospective cohort feasibility study. *BMJ Open*. 2015;5:e009282. doi: 10.1136/bmjopen-2015-009282.
 101. Ala-Korpela M. Critical evaluation of 1H NMR metabolomics of serum as a methodology for disease risk assessment and diagnostics. *Clin Chem Lab Med*. 2008;46:27–42. doi: 10.1515/CCLM.2008.006.
 102. Petersen SE, Matthews PM, Bamberg F, et al. Imaging in population science: cardiovascular magnetic resonance in 100,000 participants of UK Biobank - rationale, challenges and approaches. *J Cardiovasc Magn Reson*. 2013;15:46. doi: 10.1186/1532-429X-15-46.
 103. GBD 2013 Mortality and Causes of Death Collaborators. Global, regional, and national age-sex specific all-cause and cause-specific mortality for 240 causes of death, 1990–2013: a systematic analysis for the Global Burden of Disease Study 2013. *Lancet*. 2015;385:117–171.
 104. Seely EW, Rich-Edwards J, Lui J, Nicklas JM, Saxena A, Tsigas E, Levkoff SE. Risk of future cardiovascular disease in women with prior preeclampsia: a focus group study. *BMC Pregnancy Childbirth*. 2013;13:240. doi: 10.1186/1471-2393-13-240.
 105. Young B, Hacker MR, Rana S. Physicians' knowledge of future vascular disease in women with preeclampsia. *Hypertens Pregnancy*. 2012;31:50–58. doi: 10.3109/10641955.2010.544955.
 106. Visintin C, Muggleston MA, Almerie MQ, Nherera LM, James D, Walkinshaw S; Guideline Development Group. Management of hypertensive disorders during pregnancy: summary of NICE guidance. *BMJ*. 2010;341:c2207.

Pregnancy and Long-Term Maternal Cardiovascular Health: Progress Through Harmonization of Research Cohorts and Biobanks

Anne Cathrine Staff, Christopher W.G. Redman, David Williams, Paul Leeson, Kjartan Moe, Basky Thilaganathan, Per Magnus, Eric A.P. Steegers, Eleni Z. Tsigas, Roberta B. Ness, Leslie Myatt, Lucilla Poston and James M. Roberts
for the Global Pregnancy Collaboration (CoLab)*

Hypertension. 2016;67:251-260; originally published online December 14, 2015;

doi: 10.1161/HYPERTENSIONAHA.115.06357

Hypertension is published by the American Heart Association, 7272 Greenville Avenue, Dallas, TX 75231

Copyright © 2015 American Heart Association, Inc. All rights reserved.

Print ISSN: 0194-911X. Online ISSN: 1524-4563

The online version of this article, along with updated information and services, is located on the World Wide Web at:

<http://hyper.ahajournals.org/content/67/2/251>

Data Supplement (unedited) at:

<http://hyper.ahajournals.org/content/suppl/2015/12/14/HYPERTENSIONAHA.115.06357.DC1.html>

Permissions: Requests for permissions to reproduce figures, tables, or portions of articles originally published in *Hypertension* can be obtained via RightsLink, a service of the Copyright Clearance Center, not the Editorial Office. Once the online version of the published article for which permission is being requested is located, click Request Permissions in the middle column of the Web page under Services. Further information about this process is available in the [Permissions and Rights Question and Answer](#) document.

Reprints: Information about reprints can be found online at:

<http://www.lww.com/reprints>

Subscriptions: Information about subscribing to *Hypertension* is online at:

<http://hyper.ahajournals.org/subscriptions/>

Online Supplemental file

Manuscript title:

PREGNANCY AND LONG-TERM MATERNAL CARDIOVASCULAR HEALTH: PROGRESS THROUGH HARMONIZATION OF RESEARCH COHORTS AND BIOBANKS

By

Anne Cathrine Staff, Christopher W.G. Redman, David Williams, Paul Leeson, Kjartan Moe, Basky Thilaganathan, Per Magnus, Eric A.P. Steegers, Eleni Z. Tsigas, Roberta B. Ness, Leslie Myatt, Lucilla Poston, James M. Roberts, for the Global Pregnancy Collaboration (CoLab)

Corresponding author:

Anne Cathrine Staff, Dept. of Obstetrics and Dept. of Gynaecology, Oslo University Hospital, location Ullevål, Kirkeveien 166, Post Box 4956 Nydalen, 0424 Oslo, Norway.

Telephone: 0047 41 30 30 81

Fax: 0047 22 11 76 93

E-mail: uxnnaaf@ous-hf.no (and a.c.staff@medisin.uio.no)

Supplemental Tables References:

- (1) Mosca L, Benjamin EJ, Berra K et al. Effectiveness-based guidelines for the prevention of cardiovascular disease in women--2011 update: a guideline from the American Heart Association. *J Am Coll Cardiol*. 2011;57:1404-1423.
- (2) Hypertension in pregnancy. Report of the American College of Obstetricians and Gynecologists' Task Force on Hypertension in Pregnancy. *Obstet Gynecol*. 2013;122:1122-1131.
- (3) Management of diabetes in pregnancy. *Diabetes Care*. 2015;38 Suppl:S77-79.
- (4) Visintin C, Muggleston MA, Almerie MQ, Nherera LM, James D, Walkinshaw S. Management of hypertensive disorders during pregnancy: summary of NICE guidance. *BMJ*. 2010;341:c2207.
- (5) National Institute for Health and Clinical Excellence. Diabetes in pregnancy: management of diabetes and its complications from preconception to the postnatal period. 16 Postnatal care. <http://www.nice.org.uk/guidance/ng3/chapter/1-recommendations2015>.
- (6) The SOMANZ Guideline for the Management of Hypertensive Disorders of Pregnancy, (2014).
- (7) Nankervis A, MacIntyre HD, Moses R, Ross GP, Callaway L, Porter C, et al. ADIPS Consensus Guidelines for the Testing and Diagnosis of Hyperglycaemia in Pregnancy in Australia and New Zealand. 2014.
- (8) Martin BJ, Anderson TJ. Risk prediction in cardiovascular disease: the prognostic significance of endothelial dysfunction. *Can J Cardiol*. 2009;25 Suppl A:15A-20A.
- (9) Modena MG, Bonetti L, Coppi F, Bursi F, Rossi R. Prognostic role of reversible endothelial dysfunction in hypertensive postmenopausal women. *J Am Coll Cardiol*. 2002;40:505-510.
- (10) Perticone F, Ceravolo R, Pujia A, Ventura G, Iacopino S, Scozzafava A, Ferraro A, Chello M, Mastroberardino P, Verdecchia P, Schillaci G. Prognostic significance of endothelial dysfunction in hypertensive patients. *Circulation*. 2001;104:191-196.
- (11) Xu Y, Arora RC, Hiebert BM, Lerner B, Szwajcer A, McDonald K, Rigatto C, Komenda P, Sood MM, Tangri N. Non-invasive endothelial function testing and the risk of adverse outcomes: a systematic review and meta-analysis. *Eur Heart J Cardiovasc Imaging*. 2014;15:736-746.
- (12) Vlachopoulos C, Aznaouridis K, Stefanadis C. Prediction of cardiovascular events and all-cause mortality with arterial stiffness: a systematic review and meta-analysis. *J Am Coll Cardiol*. 2010;55:1318-1327.
- (13) Mancia G, Fagard R, Narkiewicz K et al. 2013 ESH/ESC guidelines for the management of arterial hypertension: the Task Force for the Management of Arterial Hypertension of the European Society of Hypertension (ESH) and of the European Society of Cardiology (ESC). *Eur Heart J*. 2013;34:2159-2219.
- (14) Van Bortel LM, Laurent S, Boutouyrie P, Chowienczyk P, Cruickshank JK, De BT, Filipovsky J, Huybrechts S, Mattace-Raso FU, Protogerou AD, Schillaci G, Segers P, Vermeersch S, Weber T. Expert consensus document on the measurement of aortic stiffness in daily practice using carotid-femoral pulse wave velocity. *J Hypertens*. 2012;30:445-448.
- (15) Shirwany NA, Zou MH. Arterial stiffness: a brief review. *Acta Pharmacol Sin*. 2010;31:1267-1276.
- (16) Wilkinson IB, Fuchs SA, Jansen IM, Spratt JC, Murray GD, Cockcroft JR, Webb DJ. Reproducibility of pulse wave velocity and augmentation index measured by pulse wave analysis. *J Hypertens*. 1998;16:2079-2084.
- (17) Williams B, Lacy PS, Thom SM, Cruickshank K, Stanton A, Collier D, Hughes AD, Thurston H, O'Rourke M. Differential impact of blood pressure-lowering drugs on central aortic pressure and clinical outcomes: principal results of the Conduit Artery Function Evaluation (CAFE) study. *Circulation*. 2006;113:1213-1225.
- (18) Weber T, Auer J, O'Rourke MF, Kvas E, Lassnig E, Lamm G, Stark N, Rammer M, Eber B.

- Increased arterial wave reflections predict severe cardiovascular events in patients undergoing percutaneous coronary interventions. *Eur Heart J*. 2005;26:2657-2663.
- (19) Vanoli D, Wiklund U, Lindqvist P, Henein M, Naslund U. Successful novice's training in obtaining accurate assessment of carotid IMT using an automated ultrasound system. *Eur Heart J Cardiovasc Imaging*. 2014;15:637-642.
- (20) Den Ruijter HM, Peters SA, Anderson TJ, Britton AR, Dekker JM, Eijkemans MJ, Engstrom G, Evans GW, de GJ, Grobbee DE, Hedblad B, Hofman A, Holewijn S, Ikeda A, Kavousi M, Kitagawa K, Kitamura A, Koffijberg H, Lonn EM, Lorenz MW, Mathiesen EB, Nijpels G, Okazaki S, O'leary DH, Polak JF, Price JF, Robertson C, Rembold CM, Rosvall M, Rundek T, Salonen JT, Sitzer M, Stehouwer CD, Witteman JC, Moons KG, Bots ML. Common carotid intima-media thickness measurements in cardiovascular risk prediction: a meta-analysis. *JAMA*. 2012;308:796-803.
- (21) van den Oord SC, Akkus Z, Roeters van Lennep JE, Bosch JG, van der Steen AF, Sijbrands EJ, Schinkel AF. Assessment of subclinical atherosclerosis and intraplaque neovascularization using quantitative contrast-enhanced ultrasound in patients with familial hypercholesterolemia. *Atherosclerosis*. 2013;231:107-113.
- (22) Lewandowski AJ, Davis EF, Yu G, Digby JE, Boardman H, Whitworth P, Singhal A, Lucas A, McCormick K, Shore AC, Leeson P. Elevated blood pressure in preterm-born offspring associates with a distinct antiangiogenic state and microvascular abnormalities in adult life. *Hypertension*. 2015;65:607-614.
- (23) Melchiorre K, Sutherland GR, Liberati M, Thilaganathan B. Preeclampsia is associated with persistent postpartum cardiovascular impairment. *Hypertension*. 2011;58:709-715.

S1. Examples of current guidelines on clinical follow-up for future cardiovascular disease (CVD) after a pregnancy outcome associated with increased CVD risk .

BP: blood pressure; FGR: fetal growth restriction; GDM: gestational diabetes mellitus; OGTT: Oral glucose tolerance test; PE: preeclampsia

Pregnancy outcome	Preeclampsia, FGR, GDM and Premature Delivery	Hypertensive Disorder of Pregnancy	Gestational Diabetes Mellitus
AHA¹	<p>Assessments: BP, Lipids, Fasting blood glucose, BMI</p> <p>Lifestyle advice: BMI<25kg/m² Healthy diet Physical activity No smoking</p>		
ACOG²		<p>Assessments (yearly if preterm PE/recurrent PE): BP, Lipids, Fasting blood glucose, BMI</p> <p>Lifestyle advice: Maintain maternal weight Physical activity No smoking</p>	<p>Assessments: OGTT (6 weeks postpartum)</p>
ADA³			<p>Assessments: Screen for diabetes (6-12 weeks postpartum and every 1-3 years)</p>
NICE^{4;5}		<p>Information: Increased risk of gestational hypertension/PE in future pregnancy Increased risk of hypertension and its complications later in life</p> <p>Lifestyle advice: Maintain maternal weight (BMI 18.5-24.9 kg/m²). Healthy diet</p>	<p>Information: GDM risk next pregnancy Symptoms of hyperglycemia</p> <p>Assessments: Fasting plasma glucose before hospital discharge and 6-13 weeks postpartum Test for diabetes when planning next pregnancy</p> <p>Lifestyle advice: Maintain maternal weight Healthy diet Physical activity</p>
SOMANZ⁶		<p>Assessments: BP (yearly) Lipids (every 5 years) Glucose (every 5 years)</p> <p>Lifestyle advice: Maintain maternal weight Healthy diet Physical activity No smoking</p>	
ADIPS⁷			<p>Assessments: OGTT (6-12 weeks postpartum) Fasting plasma glucose/HbA1C (at least every 1-2 years)</p>

S2.

A suggestion of current most sensible options for extended cardiovascular phenotyping in a long-term follow-up clinical research setting after pregnancy complications (also including women with uncomplicated pregnancies), provided local available necessary skills and resources.

Macrovasculature (Function - Endothelial). A plethora of studies have shown that impaired endothelial function is associated with increased risk of CVD,⁸⁻¹⁰ representing an important factor in the pathogenesis of atherosclerosis, hypertension and heart failure. Furthermore, endothelial function is known to be significantly altered during pregnancy in preeclampsia and in other hypertensive pregnancy disorders as well as for several years after pregnancy. However, studies that have addressed this question are still relatively small and often lack pre-pregnancy testing data. Therefore, we believe there remains a need to assess endothelial function in larger linked datasets to gather definitive information.

Non-invasive endothelial testing methods typically involve measurement of a change in a vascular parameter that is endothelial-dependent, e.g. brachial artery diameter or microvascular blood flow, in response to a reactive hyperemic stimulus. Reported methods include flow-mediated vasodilation (FMD), peripheral artery tonometry (PAT) and other reactive hyperemic index devices.¹¹ All have been validated as being endothelial-dependent and choice should be based on the local expertise of the center in measurement of endothelial function.

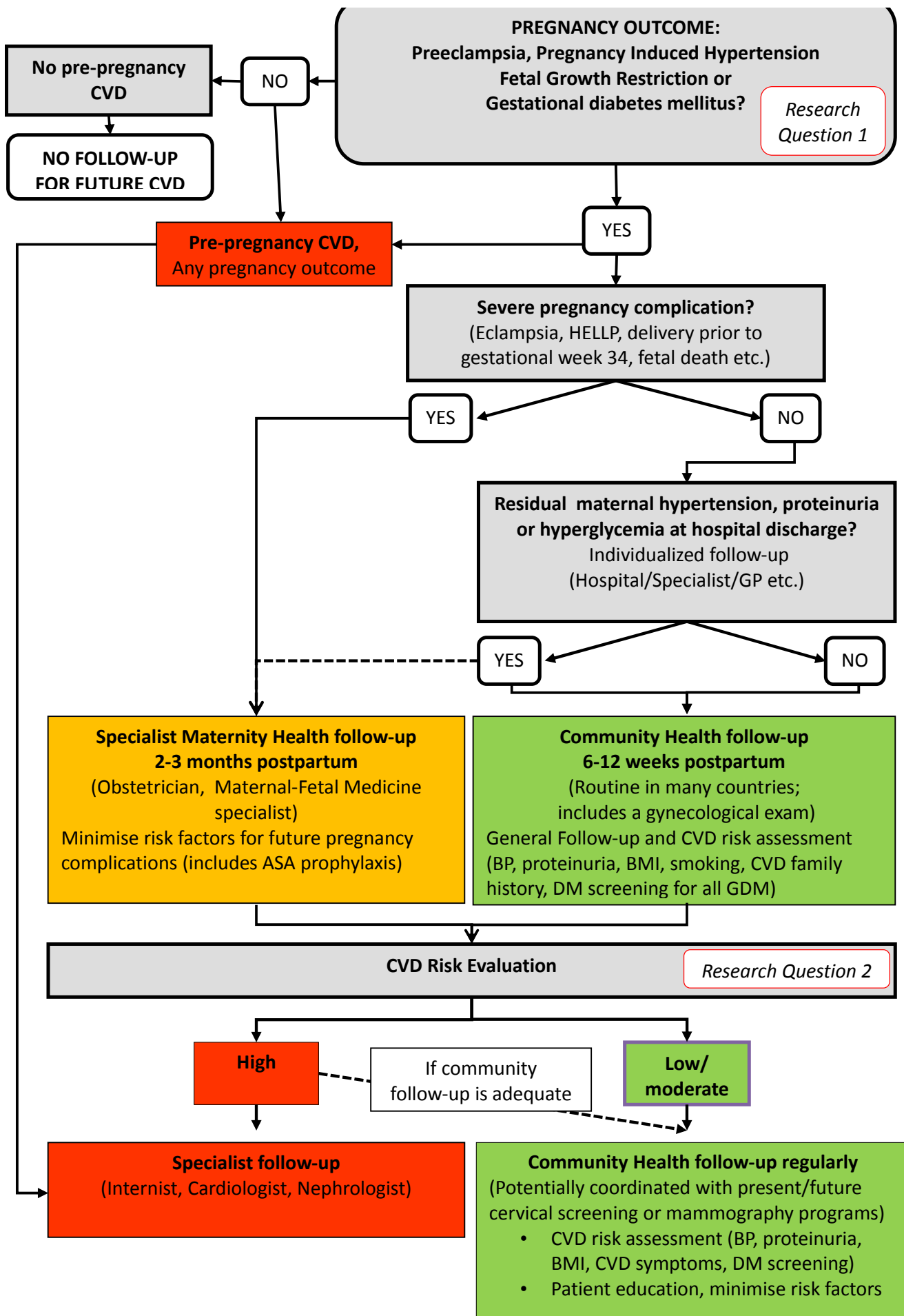
Macrovasculature (Function – Arterial Stiffness). Measurement of arterial stiffness provides additional information on large artery structure and function. It is also closely linked to CVD endpoints¹² and is recommended in the evaluation of hypertension, according to European guidelines.¹³ Typically arterial stiffness is measured as carotid-femoral pulse wave velocity (PWV) by applanation tonometry and extensive guidelines for measuring PWV have been published by van Bortel et al.¹⁴ Most techniques for assessment of arterial stiffness based on applanation tonometry also apply pulse wave analysis (PWA) techniques to generate the augmentation index (AIx) which is related to how the reflected pulse wave alters the pulse profile.¹⁵ This measure is reproducible¹⁶ and predicts cardiovascular disease in hypertensive patients¹⁷ and those undergoing percutaneous coronary intervention (PCI).¹⁸ However, the measure does not exclusively characterize central arterial stiffness being altered by heart rate and the peripheral vasculature. Therefore we suggest this measure should not be collected as the only measure of vascular stiffness, but rather as an adjunct to pulse wave velocity.

Macrovasculature (Structure). Information on structural changes of potential relevance to atherosclerotic or hypertensive heart disease can be gathered by measuring carotid vessel changes with ultrasound. These measures include carotid intima-media thickness (CIMT), which is highly reproducible,¹⁹ and also presence of plaque. CIMT alone may not predict CVD beyond traditional risk factors for CVD,^{20;21} but the presence of plaque does appear to allow better risk stratification. Therefore, we suggest carotid imaging should be considered in an extended vascular phenotyping dataset.

Microvasculature. Assessment of capillary rarefaction or microvessel structure²² involves analysis of the microcirculation in the tongue, retina or dorsal finger. Each of these microvascular beds are under different physiological control and also have different embryological origins. However, altered microvascular rarefaction is observed early in the onset of preeclampsia and changes in the microcirculation are seen during the development of several vascular conditions such as hypertension. Therefore analysis of the microcirculation may be of interest to understand the pathway between hypertensive pregnancy disorders and cardiovascular disease. Current techniques based on capillaroscopy of the skin or subungual microvasculature are time-consuming although

retinal imaging is relatively rapid. We suggest, where there is appropriate expertise, microvascular measures in an “extended” dataset follow-up after pregnancy to study how women after a history of pregnancy complications associated with future CVD differ from those without these pregnancy complications.

Cardiac. There is particular interest in the impact of pregnancy on cardiac function and therefore, in centers with appropriate expertise, we suggest to include cardiac echocardiography in longitudinal studies to characterize cardiac structure and function,²³ ideally also including pre-pregnancy evaluations.



Supplemental Figure S1. An example of follow-up flow chart after 3 categories of complicated pregnancies associated with increased risk for future cardiovascular disease (CVD).

ASA: Acetylic Salicylic Acid (low-dose). HELLP: Hemolysis, elevated liver enzymes, low platelets syndrome.

Italic Text- Remaining Research Questions:

- 1. Which biomarkers (before or during pregnancy) can best predict CVD risk in young women?*
- 2. Which biomarkers (postpartum or any time point after pregnancy) can best predict CVD risk in young women?*

Green colour: Community Health Level (e.g. General Practitioner: GP)

Orange colour: Specialist Maternity Health Care (e.g. Obstetrician)

Red colour: Specialist Medical Care (e.g. Internist, Cardiologist, Nephrologist)